

# MOROKS

OCTOBER 2014

Monrovia Rockhounds Newsletter

P.O. Box 553

Monrovia, CA 91017

Editor – Janie Duncan



## October 2014 Monrovia Rockhounds Newsletter

SUN	MON	TUE	WED	THU	FRI	SAT
			1	2 Board Mtg. @ Janie's 2:25 pm	3	4
5	6	7	8	9	10	11 MAFA Booth 10-6 Library Park
12 MAFA Booth 10-6 Library Park	13	14	15 National Fossil Day	16 Gen. Mtg Silent Auction	17	18
19	20	21	22	23	24	25
26	27	28	29	30	31 Happy Halloween	

# MOROKS OCTOBER 2014 NEWSLETTER



## MONROVIA ROCKHOUNDS

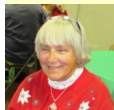


Our Website is [www.moroks.com](http://www.moroks.com)

### ELECTED OFFICERS



PRESIDENT – NEWSLETTER Janie Duncan (626) 358-8157



VICE PRESIDENT – Camille Rutkowski



SECRETARY – Michele Silcock (626) 357 8425



TREASURER – CUSTODIAN - Jim Lloyd (626) 793-9239



AUDITOR – FELLOWSHIP Louise Stack (626) 966-0350

### CHAIRPERSONS

REPRESENTATIVE – Ray Ritchey (626) 359-1624

REPRESENTATIVE – Colleen Chestnut (626) 443 7662

FEDERATION – Jo Anna Ritchey (626) 359-1624

HISTORIAN – Nancy Hamrick (626) 357-4106

BULLETIN – Janie Duncan (626) 358-8157

CUSTODIAN – Jim Lloyd (626) 793-9239

PICNIC – PHOTO Donald Sneberger (626) 941-6214

SHOW – WEBSITE – Jo Anna Ritchey (626) 359-1624

ROCK DRAWING - Louise Stack (626) 966-0350

FIELD TRIP – Ray Ritchey (626) 359-1624

CARD FELLOWSHIP— Aynn Freeman (626) 303 4343

**Mission Statement :** Our Purpose is to promote popular interest and education in the earth sciences, including geology, mineralogy, paleontology, the lapidary arts, and related subjects; to sponsor and provide means of coordinating the work and efforts of persons and groups with similar interests; and by and through such means to strive toward greater community and international good will and fellowship. We also support promoting and ensuring the right of amateur hobby collecting, recreational rock hunting and the use of public and private lands for educational and recreational purposes related to the earth sciences. We are a registered 501 C 3 non profit organization.

**Affiliations & Accreditations:** The Monrovia Rockhounds is affiliated with the California Federation of Mineralogical Societies, Inc. (CFMS), the American Federation of Mineralogical Societies (AFMS), and the American Lands Access Association (ALAA).

**Membership:** Annual donations are \$15.00 per member and \$5.00 per each additional member at the same address. \$10.00 per name badge is payable on the date of initiation.

**Meetings:** MOROKS meetings are held on the 3<sup>rd</sup> Thursday of each month. At 7:00 pm, in the basement of the United Methodist Church of Monrovia, located at 140 E. Palm Ave. Monrovia CA 91016. The building is on the corner of Ivy & Palm Ave. We use the door where there is handicapped access in the alley on the west side of the building. Do not try to enter from the front of the building. Guests are always welcome at our General Meetings. Please come and share our love of rocks.

**Information:** Monrovia Rock Hounds Inc. was founded August 28<sup>th</sup>, 1957. The club colors are green & white. The club is a non-profit organization dedicated to providing knowledge of the lapidary arts, geology, mineralogy, and other related fields. Members enjoy slide shows, lectures, demonstrations, displays, lapidary classes, our club library as well as field trips for exploration, study and collecting specimens.

We reserve the right to edit all material submitted for publication.

If you have any submissions for this newsletter or need to contact the editor Janie Duncan please email her at [janieduncan@altrionet.com](mailto:janieduncan@altrionet.com)

**Monrovia  
Rockhounds  
October  
Birthdays**

Judy McCulloch  
Sharol Carter  
Tom Freeman



**2014 MULTI-CLUB FIELD TRIP SCHEDULE** Distributed to the representatives of the Del Air – Glendora -- Monrovia -- North Orange County -- Pasadena -- Whittier Gem Mineral and Lapidary Clubs

SEPTEMBER 20 & 21 : JALAMA BEACH - Agate, jasper, petrified whale bone, travertine onyx, Marcasite and fossils.

OCTOBER 11 : SEARLES LAKE CLUB SHOW & field trips: Pink halite crystals & borax minerals.

NOVEMBER 1 & 2 : WHITTIER CLAIM AREA - honey onyx, agate, jasper, palm root, etc.

NOVEMBER 28 - 30 : WILEY WELL AREA - Geodes, Agates and other good stuff.

DECEMBER 6 : HIMALAYA MINE TOURMALINES - Dig your own pink and green California tourmalines from the world's most famous tourmaline mine, the near beautiful Lake Henshaw in San Diego County, 20 miles east of Pala. Over 200,000 lbs. produced since 1898 including quartz crystals, lepidolite, topaz, and other pegmatite minerals.

JANUARY 24 & 25 : QUARTZSITE ARIZONA SHOWS

For up-to-date information on these field trips and how to joining the trip please see your club's field trip leader or call Joe Goetz at (626)-622-9420.



*Janie Duncan*

**PREZ SEZ**

Hunting for Montana sapphires was a really fun night. All but 2 people found gemstones. Michele Silcock suggested putting them in a see through locket to show them. The silent Auction is in October and will be here before you know it so please start gathering items now. I am looking forward to seeing everyone at our Monrovia Arts Festival Booth at the park. We see so many people each year that come just o see us. Please contact me to sign up for a shift. We need lots of help.



*Camille Rut-*

**VICE PREZ SEZ**

The September program "Hunting for Sapphires" was a lot of fun. The members enjoyed doing a hands on activity. I hope you are all getting ready for the booth at Library Park for the Monrovia Arts Festival. We have a good time and enjoy working with the kids.

September 4th

**MONROVIA ROCKHOUNDS BOARD MEETING**

**President:** *Janie Duncan* called the meeting to order at 2:15 PM.

**Vice President:** *Camille Rutkowski* was absent September is Hunting for Montana Sapphires in Monrovia. October is the Silent Auction.

**Secretary:** *Michele Silcock* was absent The minutes were approved as corrected in the bulletin.

**Representative:** *Ray Ritchey* was absent **Representative:** *Colleen Chestnut* was absent

**Treasurer:** Jim Lloyd. We have 39 paid members.

**Auditor:** *Louise Stack* was absent

**Website:** *Jo Anna Ritchey* It is up to date.

**Photographer:** Donald Sneberger was absent

**Federation:** *Jo Anna Ritchey* The 2015 Show will be in Lodi and hosted by the CFMS officers. The 2016 in Placerville. They are near gold panning areas. The fall meeting of the CFMS is in Visalia November 8th. Pat LaRue has been selected as AFMF Rockhound of the Year.

**Fellowship:** *Louise Stack* Ray Ritchey is in the hospital and they do not yet know what is wrong.

**Field trip:** combined group trip SEPTEMBER 20 & 21 : JALAMA BEACH - Agate, jasper, petrified whale bone, travertine onyx, Marcasite and fossils.

**Bulletin:** *Janie Duncan* Janie received an Honorable mention from the AFMS for small Bulletin.

**Historian:** *Nancy Hamrick* was absent. The album will be at the next meeting.

**Potluck Bingo BBQ night:** *Donald Sneberger* absent

**Great Rock Drawing:** *Louise Stack* was absent Agate sphere. Janie has a few more rocks for the drawing.

**Custodian:** *Jim Lloyd* Ralph Fregoso will buy the screws for the cases.

**MOROKS Fun Day.** Field trip to Gems a Plenty in Pomona. September 19th 11 am

**Refreshments:** Denise Davis will bring them for September. Tom and Aynn Freeman will do October.

**Show:** *Jo Anna Ritchey* She has assigned sub chairmen for show. Michele will do the Main Prizes, Janie will do Kids, Kitchen and ticket printing. Louise Stack will do Volunteers. Aynn Freeman will do the Treasure Wheel. William has been asked to do Security and Publicity and Denise Davis main prize tickets sales. We hope Tom will do the truck and Thomas Witt the overnight security. Jo Anna has asked Ray Audette to help with grab bags. All indoor spots are filled. We need our banners and whatever was left from last year back from Rudy. Jo Anna says she will try to get them soon.

**Old Business:** *Janie Duncan* Monrovia Arts Festival October 11 and 12th. We have the sign up sheet at the general meeting. We do not have the spot yet at Library Park. It was \$25.00.

**New Business:** *Janie Duncan*

**Janie Duncan** Adjourned the meeting at 3:40 pm

**Bench Tips by Brad Smith** More BenchTips by Brad Smith are at FaceBook [facebook.com/BenchTips](https://www.facebook.com/BenchTips) or at [groups.yahoo.com/group/](https://groups.yahoo.com/group/) Get all 101 of Brad's bench tips in "Bench Tips for Jewelry Making" on Amazon .com



**SETTING A RIVET** Many sources tell you to use a small cross pien hammer for riveting, but I've found it's a lot easier to hit the rivet wire when using a small ball pien. The smaller the better. I'm using one now that's about 3/8 inch in diameter on the back of a chasing hammer, but I've been thinking that a 1/4 inch ball might be even better.

**SHEET WAX WITH ADHESIVE** While shopping in the Los Angeles jewelry district for supplies for a class, I found a new product that may interest you. Often I want to increase the thickness of a model by adding a layer of wax on the back side. For instance, models like a leaf or a flower petal do not cast well unless you add a little extra thickness. The problem is trying to apply a coating of wax that's smooth and even. The new product I found is a soft sheet wax with an adhesive coating. This lets me easily add thickness to a very thin model. For instance, press it onto a leaf, trim the wax to the leaf shape, and then gently bend the sandwich to the contour you want. The wax is available in a number of different thicknesses from about 26 ga to 14 ga. If interested, my supplier is Jewelry Tools & Supplies 412 W. 6th Street #1011 Los Angeles, CA 90014 213 624-8224 [jstech@sbcglobal.net](mailto:jstech@sbcglobal.net)



**September 18th****MONROVIA ROCKHOUNDS GENERAL MEETING**

**President:** *Janie Duncan* called the meeting to order at 7:00 PM.

**Vice President:** *Camille Rutkowski* was absent Tonight is Sapphires hunting in Monrovia. We will actually be screening gravel sent from Montana in water tubs. October is the Silent Auction.

**Secretary:** *Michele Silcock* The minutes were approved as corrected in the bulletin.

**Representative:** *Ray Ritchey* was absent.

**Representative:** *Colleen Chestnut* no report

**Treasurer:** *Jim Lloyd*. We have 42 paid members by the end of the night.

**Auditor** *Louise Stack*: no report.

**Website:** *Jo Anna Ritchey* up to date.

**Federation:** *Jo Anna Ritchey* The 2015 Show will be in Lodi and hosted by CFMS officers. The 2016 in Placerville. They are near gold panning areas. Jo Anna will be attending the fall CFMS meeting in Visalia November 8th

**Fellowship:** *Louise Stack* We had 4 guests present. George & Justin Brown, Robb Hull, and Kaiten. Ray Ritchey is still in the hospital with a stroke. He had surgery to unblock his carotid artery and now has an infection in the area. He is walking with therapy and is at Huntington Hospital. Jody MacCulloch had a fall and was on the floor for 2 days before she was found. He has been at the hospital and is now in a nursing home. We wish both Ray and Judy a fast recovery.

**Photographer:** Donald Sneberger took pictures .

**Show:** *Jo Anna Ritchey* has assigned sub chairmen for show. We have a couple of new dealers for the show next year. Michele will do the Main Prizes, Janie will do Kids, Kitchen and ticket printing. Louise Stack will do Volunteers. Aynn Freeman will do the Treasure Wheel. William has been asked to do Security and Publicity and Denise Davis main prize tickets sales. We hope Tom will do the truck and Thomas Witt the overnight security. We have to find someone to do grab bags as Jeremy berg moved. All indoor dealers are final.

**MOROKS Fun Day:** Trip to Gems a Plenty in Pomona Scheduled for Friday September 19th 11 am there. See Free entrance and free parking.

**Field trip:** combined group trip SEPTEMBER 20 & 21 : JALAMA BEACH - Agate, jasper, petrified whale bone, travertine onyx, Marcasite and fossils.

**Bulletin:** *Janie Duncan* no report

**Historian:** *Nancy Hamrick* Please look at the book on the table at the break.

**Potluck Bingo BBQ night:** *Donald Sneberger* no report

**Great Rock Drawing:** *Louise Stack* The drawing for a agate sphere and a citrine chunk.

**Custodian:** *Jim Lloyd* Ralph says we need new clips for the show cases and will buy them and the club will reimburse him. They will not be a standard head screwdriver.

**Refreshments:** Denise Davis brought them tonight. Tom and Aynn have volunteered for October.

**Old Business:** *Janie Duncan* 1. The Monrovia Arts Festival on October 11 and 12th at Library Park. We will get sign up sheets tonight. 10-6 both days. We need help setting up and closing up. PLEASE call Janie.

2. Janie had a cub and Boy Scout Geology class for 32 boys.

3. Janie did a talk for the Oxnard Gem club and Ray Audette went with her and they looked for fossils in Ventura.

**New Business:** *Janie Duncan* George and Justin Brown and Rob Hull have been approved as new members tonight. Welcome. We will take pictures at the next meeting.

**Janie Duncan** Adjourned the meeting at 7:32pm

Rock Song Title of the Month: (*I'm Not Your*) *Steppin' Stone* by the THE MONKEES

**October Program Silent Auction**

<http://www.amlands.org> for more information on what you can do to protect our rock sites.

## Asbestos Not for Consumption via THE NUGGET AUG 2014 by Minda Moe

Asbestos is actually a set of six minerals, which share the characteristic of having long, thin fibrous crystals (the included picture is of asbestos crystals, taken with a scanning electron microscope). There are two classes of asbestos minerals – serpentine and amphibole. Chrysotile is the only member of the serpentine class, and is obtained from serpentinite. It accounts for roughly 95% of the asbestos found in buildings in America. It is also called white asbestos, though it ranges in color from gray to green. It is very soft, ranking at 2.5 on the Mohs scale of hardness. The amphibole class consists of amosite, crocidolite, tremolite, anthophyllite, and actinolite. The amphibole minerals are much harder than Chrysotile, coming in at 5 or 6 on the Mohs scale. Amosite is a form of grunerite that is commonly called brown asbestos. Crocidolite is a fibrous form of riebeckite, and is often called blue asbestos. It is considered the most hazardous, and has an association to mesothelioma. Tremolite can be white, gray, lavender, pink, light green, or light yellow. Nephrite, a mineral in jade, is a non-fibrous green variety of tremolite. Anthophyllite can be gray, green, brown, or beige. Actinolite is commonly found in metamorphic rocks, and some forms are used as gemstones. Human civilizations have used asbestos for at least 4,500 years. A civilization in East Finland strengthened their cooking utensils with anthophyllite. Some ancient sources contain claims that wealthy Persian kings amazed their guests by throwing dirty linens into fire to clean them. These cloths were most likely made of asbestos. Marco Polo also wrote about cloth that could not be burnt in fire. The asbestos minerals became popular in the construction and manufacturing industries during the industrial era because they aid in sound absorption, exhibit desirable tensile strength, and are resistant to fire, heat, and chemical damage. They were used in dry-wall, plaster, vinyl, gas mask filters, and stage curtains for many years. Asbestos crystals have detrimental health effects, and should be treated carefully if added to a mineral collection. Pliny the Younger is said to have written that slaves who worked with asbestos became ill, though it may be an apocryphal tale. Large numbers of early deaths and lung problems were noted in asbestos-mining towns in the early 1900s. However, asbestos exposure only becomes a health concern when high concentrations of asbestos fibers are inhaled over a long time period – so the average rockhound shouldn't worry about the asbestos in their collection.



## Lagerstätte Contributed by Justin Delmas via SCMGS Lapidarian September 2014

A Lagerstätte (German: ['la:gɐˌʃtɛtə], from Lager 'storage' Stätte 'place'; plural Lagerstätten) is a sedimentary deposit that exhibits extraordinary fossils with exceptional preservation—sometimes including preserved soft tissues. These formations may have resulted from carcass burial in an anoxic environment with minimal bacteria, thus delaying decomposition. Lagerstätten span geological time from the Neoproterozoic era to the present. Worldwide, some of the best examples of



near-perfect fossilization are the Cambrian Maotianshan shales and Burgess Shale, the Devonian Hunsrück Slates and Gogo Formation, the Carboniferous Mazon Creek, the Jurassic Solnhofen limestone, and the Cretaceous Yixian Formation. Photo: “A table exclusively dedicated to ichthyolites of Konservat-Lagerstätte in the Upper Cretaceous. Lebanon, taken in the exhibition Euro Mineral Expo 2004 in Turin.” According to the author, local Lebanese collect these fossils without controls and then sell them to tourists along the coast.  
URL: <<http://www.paleoantropo.net/paleogenerale/siti.htm>>.



## Crocoite By Dave Jacobson via Canaveral Moonstone

This month we will take a look at another rare mineral, crocoite,  $\text{PbCrO}_4$ , lead chromate. Crocoite is one of the few chromate minerals. Crocoite is found in the oxidized zones of ore deposits containing lead and chromium. Associated minerals are pyromorphite, cerussite, wulfenite, limonite and vanadinite. This mineral is primarily of interest to mineral collectors. The element chromium was first extracted from crocoite as it is a minor ore of chromium. One of the most famous sources of crocoite is the Dundas District of Tasmania, Australia. The one small specimen I have in my collection comes from this locality. Other noted locations for this mineral are the Ural Mountains in Russia and Inyo and Riverside Counties in California, USA.

Crocoite is in the monoclinic crystal system. The crystals are long slender prisms, which are sometimes striated. Sometimes the crystals are hollow. The crystals can be transparent to translucent. Most specimens are not over 5 cm in length. It commonly forms in large groups of acicular crystals. It can also be granular massive. The color typically is orange red to yellow red. The streak is orange yellow. Hardness is 2.5 to 3. Specific Gravity is 6.0. The high specific gravity is due to the lead content of the mineral. It has a high index of refraction. Small brilliant gems have been cut from transparent specimens. The specimen at the right is from Platt Dundas, Tasmania and is approximately 1/2 inch in length. David Jacobson photographer.



Crocoite takes its name from the Greek, *krokos*, "saffron", alluding to the deep orange color produced from saffron dye. I used the following reference materials in preparing this article. Field Guide to Rocks And Minerals by Frederick H. Pough. Mineralogy For Amateurs by John Sinkankus. Simon & Schusters Guide to Rocks And Minerals. Amethyst Galleries Mineral Gallery on the internet at <http://mineral.galleries.com>.

## What Kind of Rockhound are You? via Nevada County Gem & Mineral Society

**The Fortune Hunter** - this rockhound sees potential wealth in every pebble. You recognize him by his clutch on a new find. He has a greedy glitter in his eye as he asks, "What is this worth?" The beauty of the stone means nothing to him. First and foremost is the monetary value.

**The Optimist** - Called the Happy Hunter, this one is characterized by a cheerful disposition. Any colorful rock excites him. At once he sees in any rock, large or small, as a gem of rare beauty. This type of rockhound is fun on a rock hunt. A drenching rain only means that the rocks will show up better. Even when he finds nothing, he has relentless enthusiasm.

**The Road Runner** - No mountain trail or river bed for this roadside seeker. He operates with the rule - never look further than 12 feet from the car. Road runner depends on low cunning for his supply of rocks. By wearing flimsy shoes, he avoids sloshing along stream beds or climbing Nevada County Gem & Mineral Society Board Meeting Minutes August 5, 2014 hills. By forgetting equipment, he plays on the sympathy of others who offer him part of their finds.

**The Smasher and Basher** - this one is recognized by the trail of rubble he makes with his sledge hammer. As he goes into rock areas, he smashes and bashes at everything in sight. By the time he is done, there is nothing but worthless chips. This convinces him that the rock must have been originally unsound, anyway

## Rules & Regulations about Native Plants

The Native Plant laws that protect plants everywhere in Arizona require that you not harm the plants. This includes digging them up, shooting them, stealing skeletons, collecting the seeds or picking the flowers. About 30 different plants and almost all cacti are on the Native Plant protected lists. There are civil penalties and fines ranging up to \$2500 and 6 months in jail for violating these laws. In State and National Parks the laws are even more specific. You can't collect plants, harm plants or animals, pick up any type of plant skeletons, collect wood, or pick up archaeological or historical objects or even take rocks from the Parks.





**RIGHT**  
More putter  
stones from  
Alaska.net



## FOR ALL OF YOU GOLFERS OUT THERE Wyoming Jade Putters

via Gemcrafters and Explorers Club "EL Gambrisino"

Jade Putters is a company that specializes in making custom golf putters out of jade. Marble, petrified wood and a variety of agates can also be custom ordered. According to the company, "many types of stone may be used; however, the primary stone is commercial grade of Wyoming nephrite jade, which is one of the toughest rocks in the world. It produces a very light feel when hit soft, and a very crisp feel when hit firm. This unique variety of jade is found only in a narrow band of rock outcrops in the middle of Wyoming. What makes it special is that it contains a high percentage of iron, magnesium and other metals in the chemical formula, which adds to the weight of the jade. The shafts are standard equipment and can be special ordered to include steel, colored steel or graphite, long or short. Standard grips are mid-sized pistol style. The putters are made to be used and conform to

USGA rules as per ruling 93-238. They are also given as executive gifts, trophies, awards and prizes. They may be custom engraved with names, dates or logos."

Jade Putters, LLC 1002 Frontier Park Ave. Cheyenne, WY 82001 307-630-7728 Email [sales@jadeputters.com](mailto:sales@jadeputters.com) <http://www.jadeputters.com>

### Another Safety Time – Think

From the Roadrunner, March 2013 via the  
The Cowtown Cutter, Fort Worth Gem and Mineral Club  
It's not just the hard hat, the specs and the glove,  
That bring you home safe to the family you love.  
The guard on the grinder, the chain on the hose,  
The safety load blinder, the foul weather clothes,  
The latch on the load hook, the outrigger block,  
Emergency brakes, the standard wheel chocks,  
The safety valve feature on high pressure tanks,  
The cave-in protection on vertical banks.  
The well installed best guard, the safety toe shoes,  
The fire extinguisher ready to use,  
The seat belt that holds you inside the car,  
The road sign of safety, wherever you are,  
These things are mere tools, like a carpenter's plane  
They won't produce safety, or minimize pain  
Your health and your safety depend upon you:  
On whether you think about things that you do.  
So think before acting; make thinking a rule.  
Make use of your brain, your best safety tool.



© 2014 CES [www.grayzonecomics.com](http://www.grayzonecomics.com)



### Rockhound Prescription

I don't need Pilates  
I don't need a gym  
I don't need a diet plan  
to keep me trim.  
I belong to a Rock Club  
which serves me quite well  
lugging rocks up hill and down  
for the monthly show and tell.  
I struggle through brush with my  
bag and pick and check now and  
then for the occasional tick.  
I wade through rivers  
and lower into caves  
for those highly prized gems  
my impassioned heart craves.  
My stamina is strengthened  
by my ooh and aah finds.  
My house and yard are filled  
with rocks of all kinds.  
My doctor says, "You're in great  
shape. Tell me how do you do it?"  
"Being a rockhound," I answer,  
"keeps me active and fit."  
He looks at me for a moment then  
grabs prescription pad and pen.  
"I want to be a rockhound,  
tell me where do you meet and  
when." by Jaka via The Rockhounder





Photos by Donald Sneberger

## MOROKS PICTURE PAGE

### September Program Hunting for Montana Sapphires



George Brown and son Justin new MOROKS

Harold Vannatta



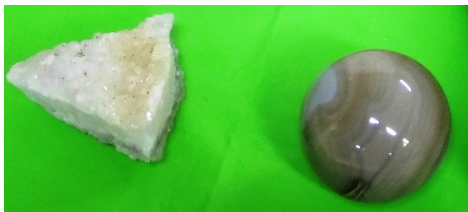
Jim Lloyd looking for sapphires



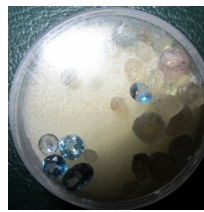
Janie Duncan and Jo Anna Ritchey sorting gravel



Loretta Silvera hunting



Citrine crystal and Agate sphere prizes



Montana Yogo Sapphires



Left is our blue sapphire  
Refreshment table by Denise Davis  
Right George & Justin Brown  
Ray Audette and Holly Galluzzo





## CFMS October Rock Shows

**October 1 - 5: JOSHUA TREE, CA**, Hi-Desert Rockhounds of Moronga Valley, Sportsman's Club of Joshua Tree, 6225 Sunburst Street, Hours: 9 - 6 daily, Website: [www.jtsportsmansclub.com/gemshow.htm](http://www.jtsportsmansclub.com/gemshow.htm)

**October 10 - 12: RENO, NV**, Reno Gem & Mineral Society, Craft Show, Reno Town Hall, Corner of Peckham & So. Virginia Street, Hours: Fri 10 - 6; Sat 10 - 5; Sun 10 - 3, Contact: Theresa Langhans, (775) 475-0842, Email: [theresalanghans@yahoo.com](mailto:theresalanghans@yahoo.com), Website: [www.renorockhounds.com](http://www.renorockhounds.com)

**October 11 - 12: ANDERSON, CA**, Shasta Gem & Mineral Society, Shasta County Fairgrounds, Briggs Street, Hours: Sat 9 - 5; Sun 10 - 4, Steve Puderbaugh, (530) 604-2951, Website: [www.shastagemandmineral.com](http://www.shastagemandmineral.com)

**October 11 - 12: TRONA, CA**, Searles Lake Gem & Mineral Society, Gem & Mineral Building, 13337 Main Street, Hours: Sat 7:30 - 5; Sun 7:30 - 4, Jim & Bonnie Fairchild, (760) 372-5356, Email: [slgms@iwvisp.com](mailto:slgms@iwvisp.com), Website: [www1.iwvisp.com/tronagemclub](http://www1.iwvisp.com/tronagemclub)

**October 11 - 12: GRASS VALLEY, CA**, Nevada County Gem & Mineral Society, Nevada County Fairgrounds, 11228 McCourtney Road, Hours: 10 - 5 daily, Contact: Todd Lawson, Email: [ncgms@hotmail.com](mailto:ncgms@hotmail.com), Website: [www.ncgms.org](http://www.ncgms.org)

**October 12 - 13: VISTA, CA**, Vista Gem & Mineral Society, Antique Gas & Steam Engine Museum, 2040 North Santa Fe Avenue, Hours: Sat 10 - 5; Sun 10 - 4, Contact: Ray Pearce, (760) 726-7570, Email: [raysrocks@cox.net](mailto:raysrocks@cox.net)

**October 18: WEST HILLS, CA**, Woodland Hills Rock Chippers, First United Methodist Church, 22700 Sherman Way, Hours: 10 - 5, Contact: Beth Pio, Email: [info@rockchippers.org](mailto:info@rockchippers.org), Website: [www.rockchippers.org](http://www.rockchippers.org)

**October 18 - 19: PLACERVILLE, CA**, El Dorado County Mineral & Gem Society, El Dorado County Fairgrounds, 100 Placerville Drive, Hours: 10 - 5 daily, Show Website: [www.rockandgemshow.org](http://www.rockandgemshow.org),

**October 18 - 19: WHITTIER, CA**, Whittier Gem & Mineral Society, Whittier Community Center, 7630 Washington Avenue, Hours: 10 - 5 daily, Contact: Marcia Goetz (626) 914-5030

**October 25 - 26: CAYUCOS, CA**, San Luis Obispo Gem & Mineral Club, Cayucos Vets Hall, 10 Cayucos Drive, Hours: 9 - 5 daily, Contact: Kim Patrick Noyes, (805) 610-0603, Email: [kimnoyes@gmail.com](mailto:kimnoyes@gmail.com), Website: [www.slogem.org](http://www.slogem.org)

### WEST COAST GEM & MINERAL SHOW

NOV. 7 - 9, 2014

SANTA ANA, CA

Holiday Inn - Orange County Airport  
2726 S. Grand Ave.

(take 55 Fwy exit for Dyer Rd. to S. Grand Ave.)

75 Top Quality Dealers

Minerals ★ Fossils ★ Gemstones ★ Jewelry

Beads ★ Decorator Pieces ★ Meteorites

Lapidary ★ Metaphysical

FREE ADMISSION ★ FREE PARKING ★ WHOLESALE ★ RETAIL

Show Hours: Fri. & Sat. 10 - 6 ★ Sun. 10 - 5

LLD Productions, Inc. in cooperation with Martin Zinn Expositions, L.L.C., P.O. Box 665, Bernalillo, NM 87004

Fax: (303) 223-3478, [mzexpos@gmail.com](mailto:mzexpos@gmail.com), [www.mzexpos.com](http://www.mzexpos.com)

Like us on facebook



Fluorite - Auglaize Quarry, OH  
Photo by Joe Budd©

### National Fossil Day October 15th

The National Park Service and the American Geosciences Institute are partnering to host the fifth annual National Fossil Day on October 15, 2014 during Earth Science Week. National Fossil Day is a celebration organized to promote public awareness and stewardship of fossils, as well as to foster a greater appreciation of their scientific and educational value.

Fossils discovered on the nation's public lands preserve ancient life from all major eras of Earth's history, and from every major group of animal or plant. In the national parks, for example, fossils range from primitive algae found high in the mountains of Glacier National Park, Montana, to the remains of ice-age animals found in caves at Grand Canyon National Park, Arizona.. See <http://nature.nps.gov/geology/nationalfossilday/>

### Bardarbunga volcano, Iceland Eruptions August 31, 2014.

